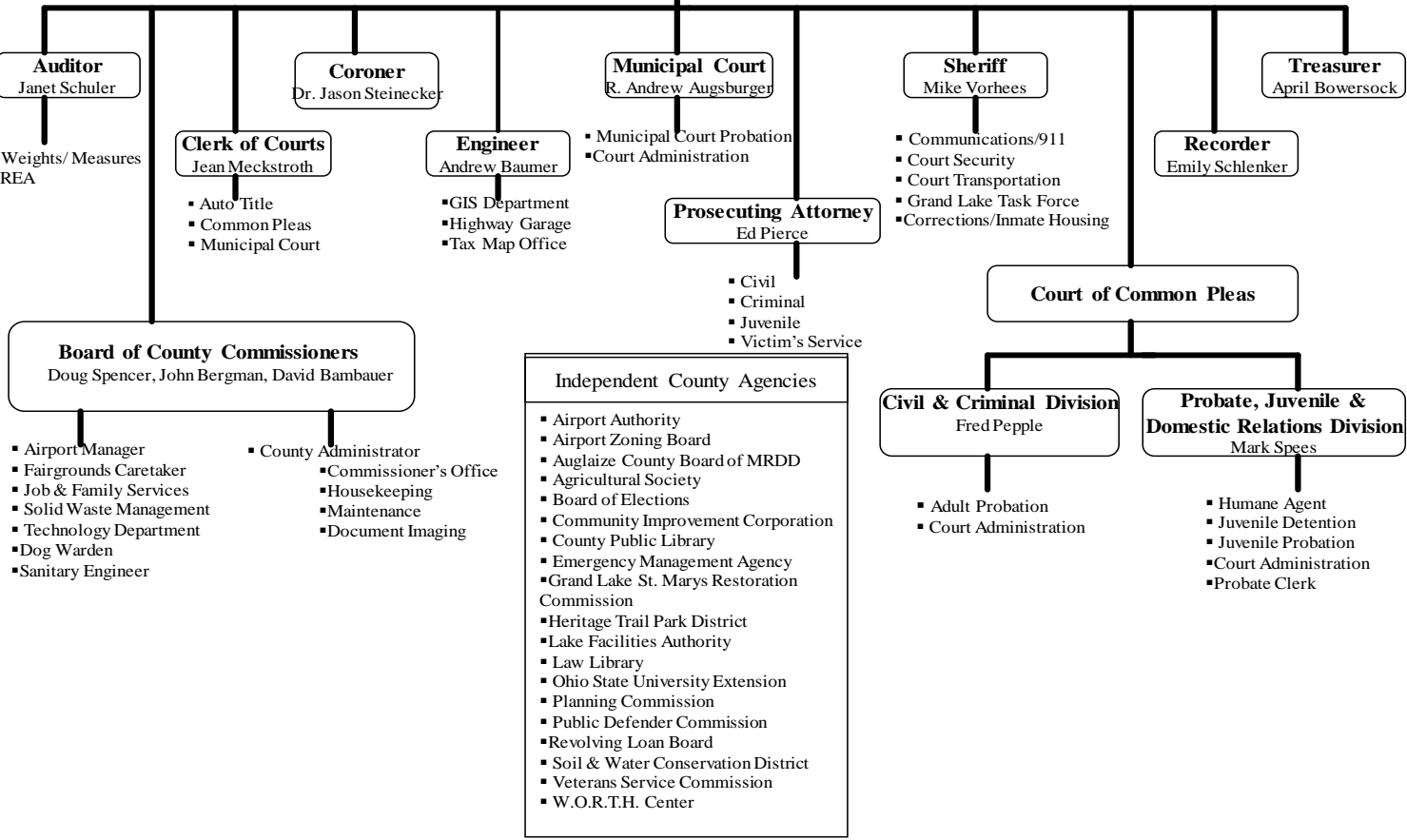


Auglaize County Electorate



Auditor
Janet Schuler

- Weights/ Measures
- REA

Clerk of Courts
Jean Meckstroth

- Auto Title
- Common Pleas
- Municipal Court

Coroner
Dr. Jason Steinecker

Engineer
Andrew Baumer

- GIS Department
- Highway Garage
- Tax Map Office

Municipal Court
R. Andrew Augsburger

- Municipal Court Probation
- Court Administration

Prosecuting Attorney
Ed Pierce

- Civil
- Criminal
- Juvenile
- Victim's Service

Sheriff
Mike Vorhees

- Communications/911
- Court Security
- Court Transportation
- Grand Lake Task Force
- Corrections/Inmate Housing

Recorder
Emily Schlenker

Treasurer
April Bowersock

Board of County Commissioners
Doug Spencer, John Bergman, David Bambauer

- Airport Manager
- Fairgrounds Caretaker
- Job & Family Services
- Solid Waste Management
- Technology Department
- Dog Warden
- Sanitary Engineer
- County Administrator
- Commissioner's Office
- Housekeeping
- Maintenance
- Document Imaging

- Independent County Agencies**
- Airport Authority
 - Airport Zoning Board
 - Auglaize County Board of MRDD
 - Agricultural Society
 - Board of Elections
 - Community Improvement Corporation
 - County Public Library
 - Emergency Management Agency
 - Grand Lake St. Marys Restoration Commission
 - Heritage Trail Park District
 - Lake Facilities Authority
 - Law Library
 - Ohio State University Extension
 - Planning Commission
 - Public Defender Commission
 - Revolving Loan Board
 - Soil & Water Conservation District
 - Veterans Service Commission
 - W.O.R.T.H. Center

Court of Common Pleas

Civil & Criminal Division
Fred Pepple

- Adult Probation
- Court Administration

Probate, Juvenile & Domestic Relations Division
Mark Spees

- Humane Agent
- Juvenile Detention
- Juvenile Probation
- Court Administration
- Probate Clerk